

# MONTHLY MEMBERSHIP PROGRESS REPORT

District 31 L

Results as of: 8/31/2024

GMT:

LOCATION NORTH CAROLINA

GMT CA

| Clubs                 |               |           |               |
|-----------------------|---------------|-----------|---------------|
| RESULTS FOR 2024-2025 |               |           |               |
| QUARTER               | NEW CLUB GOAL | NEW CLUBS | DROPPED CLUBS |
| JULY/AUG/SEPT         | 0             | 0         | 0             |
| OCT/NOV/DEC           | 1             | 0         | 0             |
| JAN/FEB/MAR           | 0             | 0         | 0             |
| APR/MAY/JUNE          | 0             | 0         | 0             |

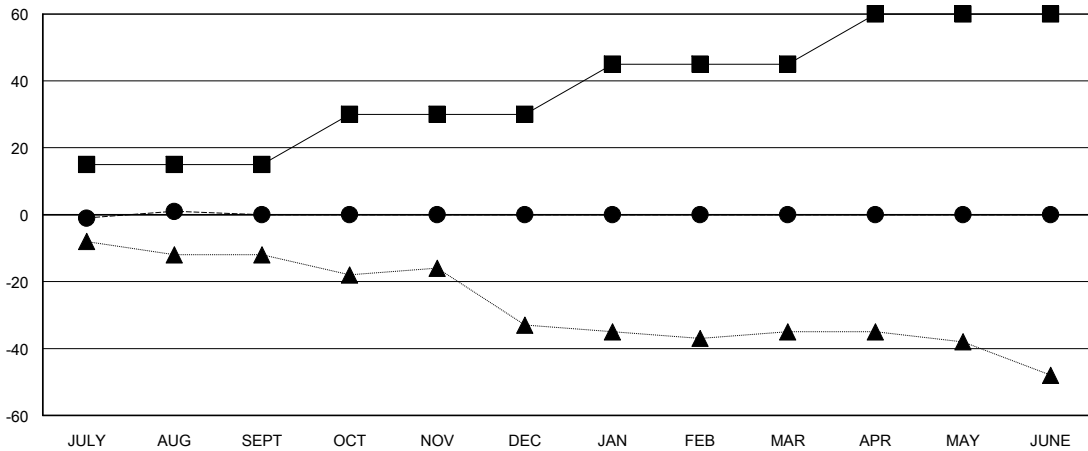
| Members               |                        |                      |  |
|-----------------------|------------------------|----------------------|--|
| RESULTS FOR 2024-2025 |                        |                      |  |
| QUARTER               | MEMBER GROWTH NET GOAL | MEMBER GROWTH ACTUAL | DROPPED MEMBERS ACTUAL (including transfers) |
| JULY/AUG/SEPT         | 15                     | 12                   | 9  |
| OCT/NOV/DEC           | 15                     | 0                    | 0  |
| JAN/FEB/MAR           | 15                     | 0                    | 0  |
| APR/MAY/JUNE          | 15                     | 0                    | 0  |

GOALS AND ACTUAL NEW CLUBS CUMULATIVE



- - CURRENT YEAR GOALS FOR NEW CLUBS
- - CURRENT YEAR ACTUAL NEW CLUBS
- ▲ - LAST YEAR ACTUAL NEW CLUBS

GOALS AND ACTUAL MEMBERS CUMULATIVE



- - MEMBER GROWTH NET GOAL
- - MEMBER GROWTH ACTUAL
- ▲ - LAST YEAR MEMBERSHIP ACTUAL

|                        |          |
|------------------------|----------|
| DROPPED CLUBS: 0       |          |
| <b>DROPPED MEMBERS</b> |          |
| DECEASED               | 2        |
| CLUB CANCELLED         | 0        |
| OTHER                  | 7        |
| <b>TOTAL</b>           | <b>9</b> |

5 CLUBS OF 46 ADDED 1 OR MORE NEW MEMBERS

| GENDER DISTRIBUTION |              |
|---------------------|--------------|
| MALE                | 415 (60.06%) |
| FEMALE              | 276 (39.94%) |

[CLICK HERE FOR CUMULATIVE MEMBERSHIP DATA](#)

|                                 |     |
|---------------------------------|-----|
| TOTAL FAMILY UNIT MEMBERS       | 168 |
| FAMILY MEMBERS PAYING HALF DUES | 87  |